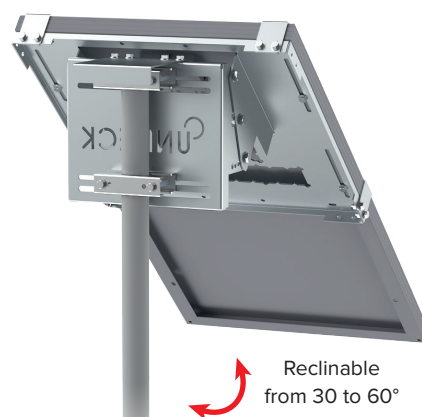




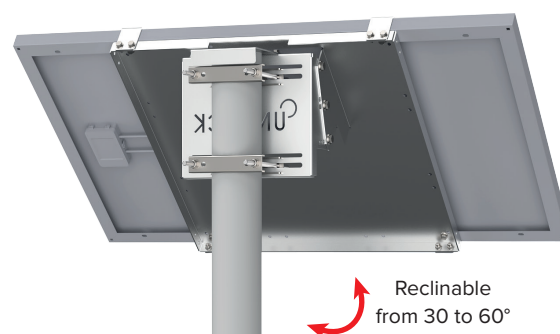
UNIFIX 20S
For Unisun 10.12M/ 10.24M/ 20.12M/ 20.24M
Landscape orientation
Masthead or middle of the mast
Mounting flanges in option
Ref 0286



UNIFIX 50S
For Unisun 30.12M/ 50.12M/ 50.24M/ 55.12BC
Landscape orientation
Masthead or middle of the mast
Mounting flanges in option
Ref 0293



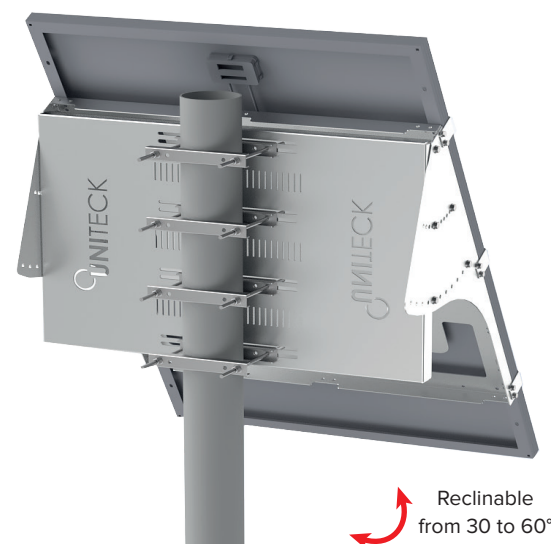
UNIFIX 100S
For Unisun 80.12M/ 100.12M/ 100.24M/ 120.12BC
Landscape or portrait orientation
Masthead or middle of the mast
Mounting flanges in option
Ref 0323



UNIFIX 150S
For Unisun 150.12M/ 150.24M/ 165.12BC/ 200.12BC
Landscape or portrait orientation
Masthead or middle of the mast
Mounting flanges in option
Ref 0866



UNIFIX 200S
For Unisun 200.24M
Landscape or portrait orientation
Masthead or middle of the mast
Mounting flanges in option
Ref 0941



UNIFIX 300S
For Unisun 300.12M
Landscape or portrait orientation
Masthead or middle of the mast
Mounting flanges in option
Ref 2082



Mounting Brackets - Reclinable UNIFIX S

POLE & MAST

RECLINABLE BRACKETS FOR UNIVERSAL PANELS

Thanks to their universal fastening system, UNIFIX S mounting bracket adapts to all signal masts. Simply, slide your flanges with the M8 or M10 screws onto the rear rail and then tighten.

UNIFIX S offers the possibility to choose the inclination. The tilting system enables you to optimize the electrical production according to the area and the period of use.

With its Easy Install system and their light aluminium structure, its mounting can easily be done alone, without extra assistance.

UNITECK

- Adaptable on all signal masts
- Corrosion resistant aluminium + A4 stainless steel screws
- Easy to install
- Reclinable from 30 to 60°
- Can be fixed on any support
- With flanges or U clamps (flanges and M8 or M10 screws in option)

Designed, made in France



Light, innovative

Tilting multi-position system to optimize your electrical performances

Easy installation system

Its upper cap relieves the weight of the installation so that their mounting can easily be done alone, without extra assistance. This cap can be removed afterwards for a fixation on the middle of the mast. It is used on pole with a maximum of 130mm diameter. For UNIFIX 100S /150S /200S.



OPTION UNIFIX S or SF POST FLANGES STAINLESS STEEL FASTENERS (x2)

Diam 40-60 mm
Ref 2631

Diam 60-90 mm
Ref 2648

Diam 90-130 mm
Ref 2655

Diam 130-190 mm
Ref 2662

Diam 190-250 mm
Ref 4185