



UNIFIX 100B
560 mm panels max
For Unisun 20.12M(x2)/ 20.24M(x2)/
30.12M/ 50.12M/ 50.24M/ 55.12BC/
80.12M/ 100.12M/ 100.24M/ 120.12BC
Landscape orientation
Inclinable de 0 à 90°
Ref 0644



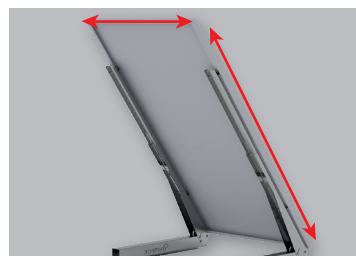
UNIFIX 150B
700 mm panels max
For Unisun 150.12M/ 150.24M/ 165.12BC/
200.12BC
Landscape orientation
Inclinable de 0 à 90°
Ref 0545



UNIFIX 300B
1 100 mm panels max
(=350-400W)
For Unisun 100.12M(x2)/ 100.24M(x2)/
120.12BC(x2)/ 150.12M/ 150.24M/ 165.12BC/
200.12BC/ 200.24M/ 300.12M
Landscape or portrait orientation
Inclinable de 10 à 60°
Ref 1092



UNIFIX 500B
1 100 mm panels max
(=350-400W)
For Unisun 100.12M(x2)/ 100.24M(x2)/
120.12BC(x2)/ 150.12M/ 150.24M/ 165.12BC/
200.12BC/ 200.24M/ 300.12M
Landscape or portrait orientation
Inclinable de 10 à 60°
Ref 4147



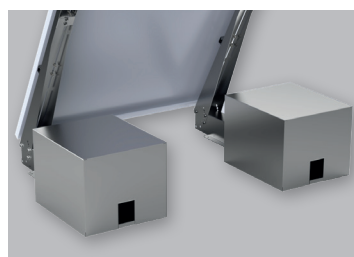
UNIVERSAL
Thanks to the oblong hole,
UNIFIX B accepts the fixing of
panels of different sizes:
- length from 990 to 2500
mm max.
- width from 990 to 1400 mm
max.



RECLINABLE
Multi-position reclinable
system to optimize your
electrical performance
depending on the season
and geographical area.



**MICROINVERTERS AND
GROUNDING**
For this application, Unifix
300B, 500B and 600B
incorporate fixing zones for
microinverters (Ø M8) and
grounding.



BALLAST BOX OPTION
The ballast box can hold
sand, concrete or gravel up.
Fits UNIFIX 300B, 500B and
600B (inclinable from 30°
to 60°)



Mounting Brackets - UNIFIX B

FLOOR & WALL

BASIC BRACKETS

Sturdy and easy to install, UNIFIX B is the ideal economical
ideal for fixing your panels to all flat surfaces
(wall, concrete floor, wood frame).

UNIFIX B can be either :
- fixed to a flat surface using M8 dowels (not supplied)
- ballasted using the optional ballast box.

Its multi-position tilting system allows you to increase your electricity
production by choosing the ideal orientation according to the season.



UNIFIX 600B
For panel size
2500 x 1400 mm max
Landscape or portrait orientation
Tilts from 10 to 60°
Ref 3409

UNITECK

Tilts from 0 to 60
(except 300B, 500B and
600B: 10 to 60°)

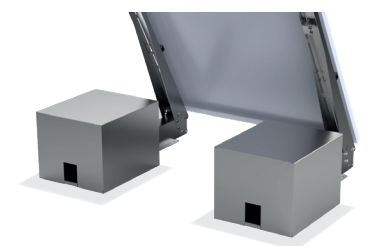
Corrosion resistant
Galvanised steel and
screws

Easy to install

Wall mounting

Floor mounting

Designed,
made in France



BALLAST BOX
For UNIFIX 300B, 500B,
600B
Ref 5175