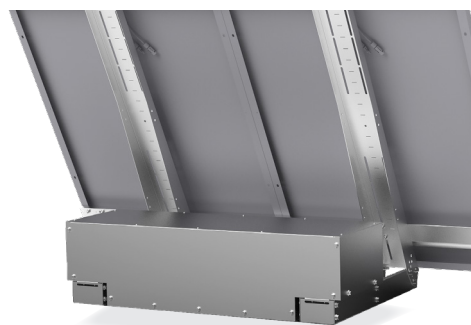


**UNIFIX 800 EGF**  
For UNISUN 200.24M (x2)/  
UNISUN 300.12M (x2)  
or 2 panels :  
- width from 808 to 1200mm  
- length from 1200 to 2300mm  
Portrait orientation  
Ref 2105



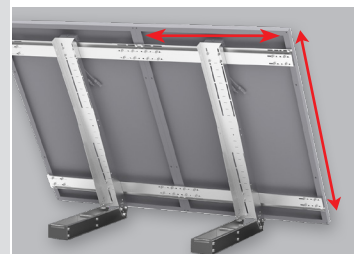
**SINGLE PANEL  
EXTENSION**  
Ref 2686



**BALLAST BOX**  
Ref 2112

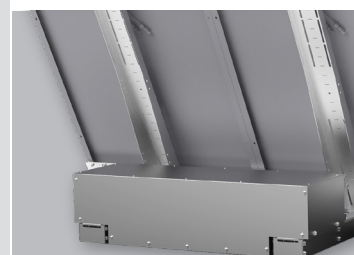


**CONCRETE SLABS  
MOUNTING BRACKETS**  
Ref 2679



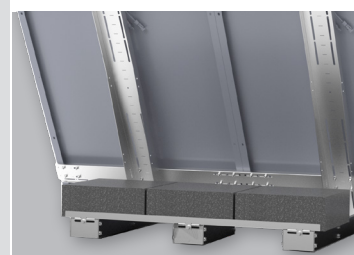
#### UNIVERSAL

Thanks to their design based on the use of hole drilling, UNIFIX 800 EGF can receive up to 400W panels with the following dimensions :  
- width from 808 to 1200 mm  
- length from 1200 to 2300 mm



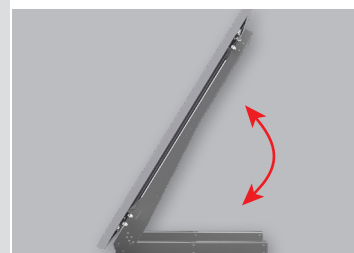
#### BALLAST BOX OPTION

Ballast box for 2 panels with a capacity of 130 litres or 0,13m<sup>3</sup>. Can thus contain dry sand with a 1800Kg/m<sup>3</sup> density, for a total weight of 240kg for an optimal ballasting.



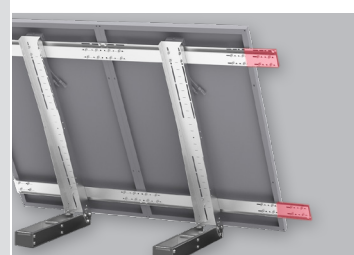
#### CONCRETE SLABS BRACKETS OPTION

Concrete slabs brackets are made to carry up to 24 standard 40x40 cm concrete slabs of 12,5kg, for a total weight of 300kg for an optimal ballasting.



#### ADJUSTABLE INCLINATION

Multi-position tilting system for an optimization of your electrical performances according to the season and to your geographical area.



#### MULTI-PANEL

Infinite assembly with an even or odd number of panels (for odd numbers, add a single panel extension)



### Mounting Brackets - UNIFIX 800 EGF

## FLOOR

#### ■ MULTI-PANEL BRACKETS

Evolute multi solar panels mounting brackets for flat surfaces.

Easy to install, UNIFIX 800 EGF is made to be used in horizontal position on a flat and rigid surface (eg: grass, sand, concrete floor, wood frame).

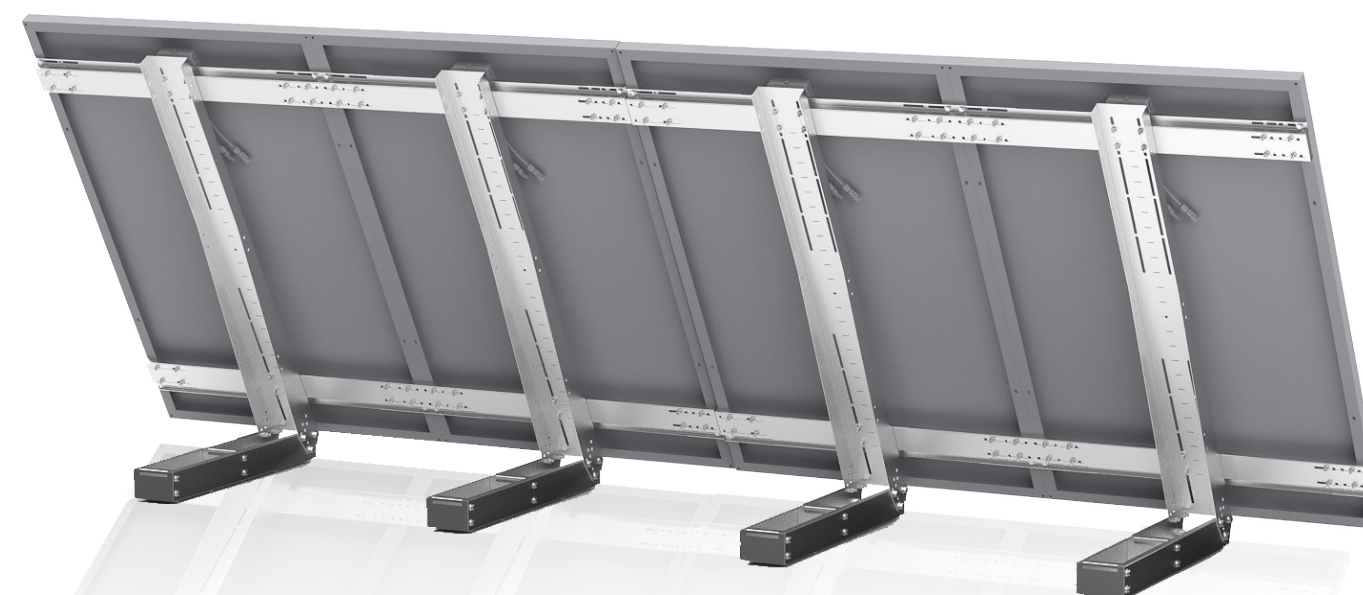
UNIFIX 800 EGF can be :

- fixed to a concrete floor thanks to M8 dowels (not included)
- weighted using a ballast box (option)
- weighted using the brackets for concrete slabs (option)

With its galvanized steel structure and corrosion resistant stainless-steel screws, it is perfectly suited for outdoor use.

Equipped with a multi-position tilting system, UNIFIX 800 EGF bracket enables an optimization of your panel's performance by modifying the angle inclination according to your geographical position and the season :

- only Unifix 800 EGF : from 10 to 60 degrees.
- with ballast box option : from 30 to 60 degrees
- with brackets for concrete slabs option : from 20 to 60 degrees



### + UNITECK



Corrosion resistant  
galvanised steel  
+ stainless steel screws



Easy to install



Reclinable from 10 to 60°



Optimal ballasting (via  
its ballast box or via its  
"concrete slabs" bracket)



Scalable multi-panel



Designed,  
made in France